

State of Florida

DEPARTMENT OF ENVIRONMENTAL PROTECTION

DRAWING NUMBER

DRAWING NUMBER

5645

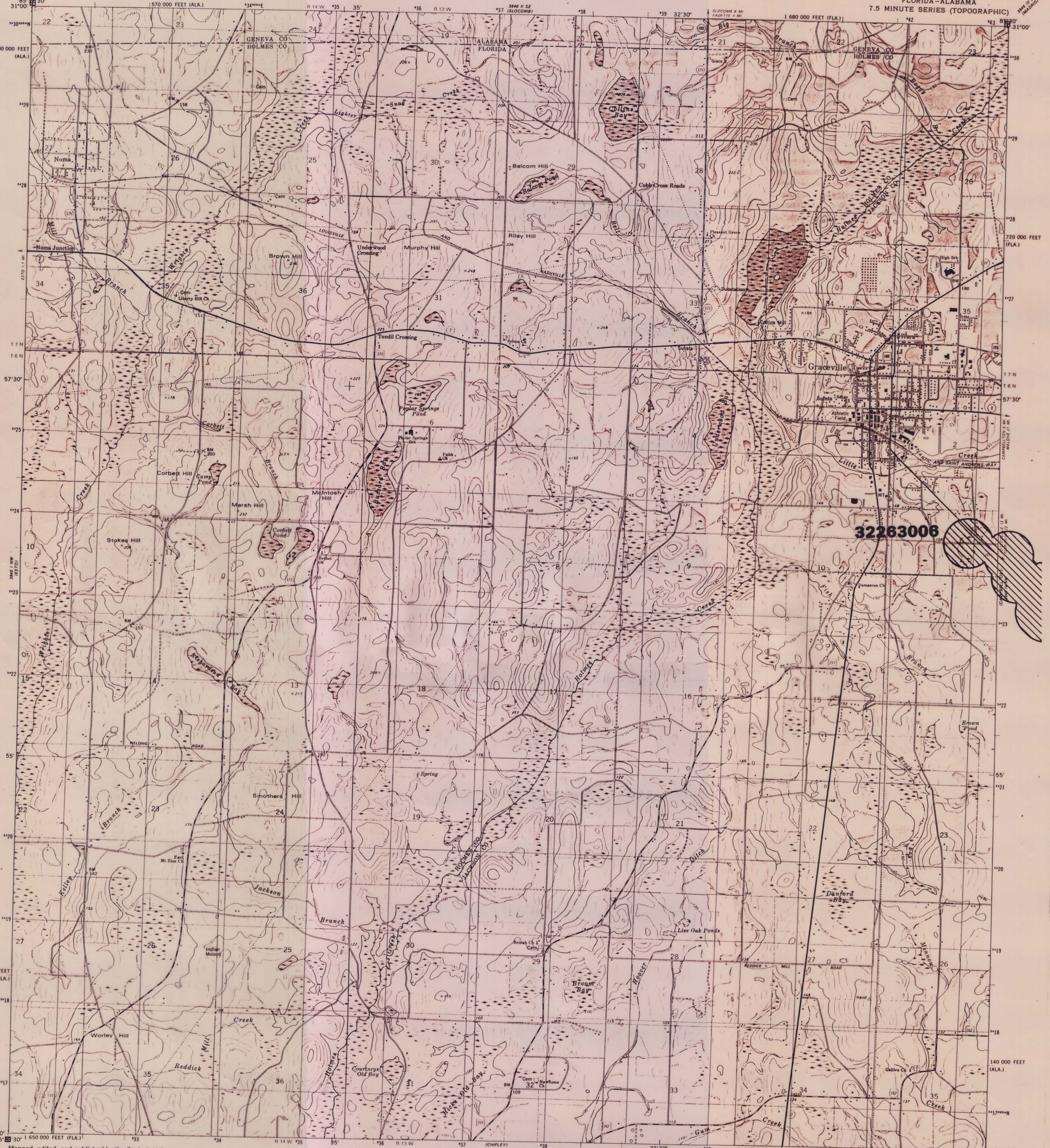
DRAWING NUMBER

Delineation Map for Potable Water Well Permitting Chapter 62-524 F.A.C.

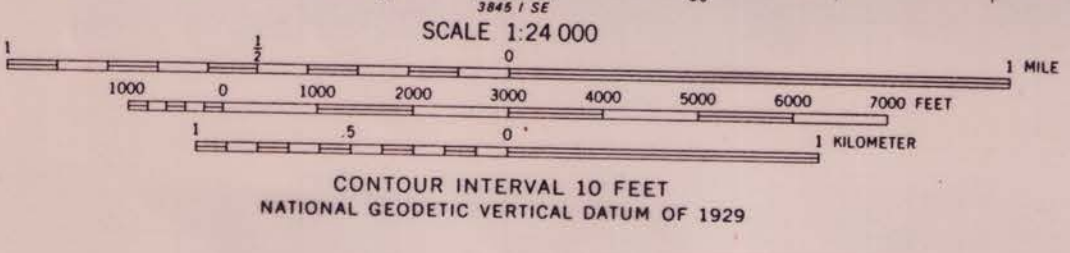
Prepared November 1994 Quad-5645

GRACEVILLE UNITED STATES DEPARTMENT OF THE INTERIOR GEOLOGICAL SURVEY

GRACEVILLE QUADRANGLE FLORIDA-ALABAMA 7.5 MINUTE SERIES (TOPOGRAPHIC)



Mapped, edited, and published by the Geological Survey in cooperation with the U. S. Corps of Engineers. Revised in cooperation with State of Florida agencies Control by USGS and NOS/NOAA. Culture and drainage in part compiled from aerial photographs taken 1947. Topography by plane-table surveys 1950. Revised from aerial photographs taken January 1976. Field checked 1978. Map edited 1982. Polyconic projection. 10,000-foot grid ticks based on Florida coordinate system, north zone and Alabama coordinate system, east zone. 1000-meter Universal Transverse Mercator grid, zone 16. 1927 North American Datum. To place on the predicted North American Datum 1983 move the projection lines 16 meters south and 7 meters west as shown by dashed corner ticks. Fine red dashed lines indicate selected fence and field lines where generally visible on aerial photographs. This information is unchecked.



ROAD CLASSIFICATION: Primary highway, hard surface; Secondary highway, hard surface; Light-duty road, hard or improved surface; Unimproved road. Includes symbols for Interstate Route, U. S. Route, State Route, and County Route.

GRACEVILLE, FLA.-ALA. N3052.5-W85307.5 1982 DMA 3845 1 NE-SERIES 1982

Explanation

The following describe the delineation areas with the contamination for which each was delineated and for which testing is required under Rule 62-524.600(1) F.A.C. Note: (1) Indicates solvent bonded couplings prohibited (62-524.650(2)(b)) (2) Indicates subsidized waterlines. Mandatory connection requirements may apply (62-524.300(2)(6))

The delineated areas on this map represent areas where ground water contamination is known to exist as defined in chapter 62-524, F.A.C. This does not indicate that the areas which are not delineated are necessarily free from ground water contamination.

32263006 Ethylene Dibromide

INFORMATION: For Copies of this map call: Bureau of Information Systems (904)922-7121 For information about this map contact: Agricultural Source and Water Well Management Section Bureau of Drinking Water and Ground Water Resources Division Of Water Facilities Department of Environmental Protection (904)488-3801 Map Prepared November 1994 Delineation Round 9